

LED LR40 540 PMMA_d-0-M12-57

Art. Nr. 1-000000-06598

Ktl. Nr. 15070537

EAN Nr. 4260654161502

Normen / Norms

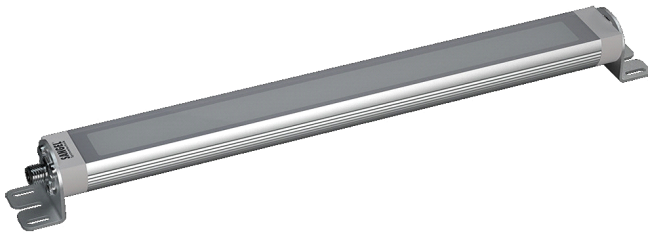
DIN EN 60598-1 :2021/A11:2022 DIN EN 60529 :1991/A2:2013/AC:2019-02

DIN EN 55015:2019+A11:2020

DIN EN IEC 63000:2018

DIN EN 61547:2009

DIN EN 62471:2009

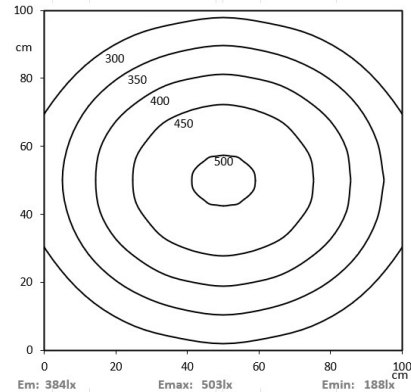


Elektrische Rahmenbedingungen / Electrical characteristic

Netzanschluss / Main Supply	24 VDC
Leistung / Power	13,3 W
Dimmbar / Dimmable	extern PWM
Anschluss / Connection Type	Flansch, M12, 5-Pol, A-Codiert
Kaskadierbar / Cascadable	Nein
Polbild	

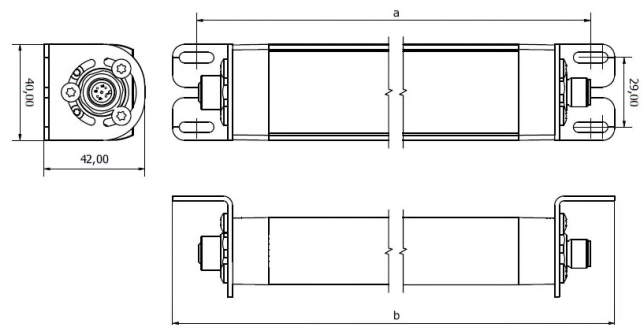
Licht / Light

Bestückt / Fitted With	LED
Lichtfarbe / Light Colour	5700 K
Lichtstrom / Luminous Flux	1395 lm
Effizienz / Efficiency	105 lm/W
Abstrahlwinkel / Beam Angle	100°
Farbtreue / Colour Rendering	RA / CRI >80
Photobiological Safety	RG-1



Mechanik / Mechanics

Gehäuse / Housing	Aluminium
Abdeckung / Cover	PMMA, Diffus
Befestigung / Fastening	Drehbar
Gewicht(Netto) / Weight(Net)	0,65 kg
Betriebstemperatur / Operating Temp.	-20°C / +50°C
Lebensdauer / Lifetime	min. 60000 h
Zubehör / Equipment	Winkel inkl.



a= 570mm b= 590mm

*Technische Änderungen vorbehalten | technical modifications reserved